

Portraits of the Queen

Learning Objective:

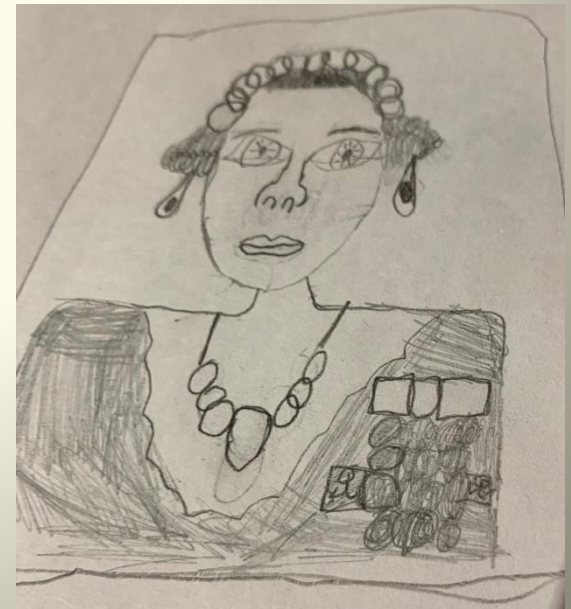
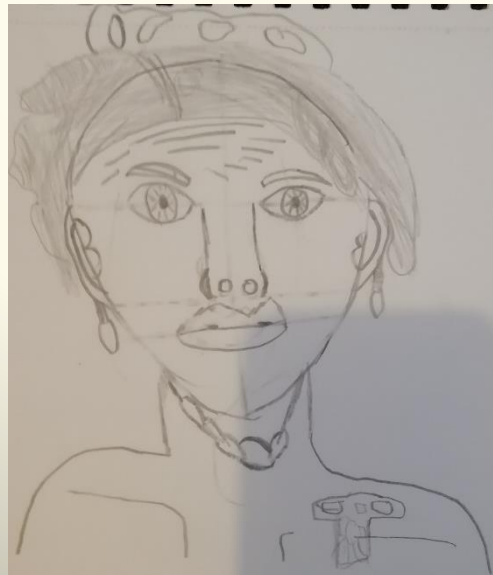
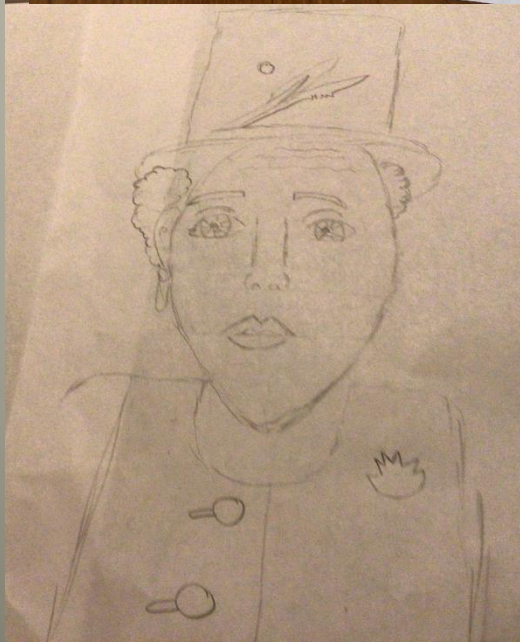
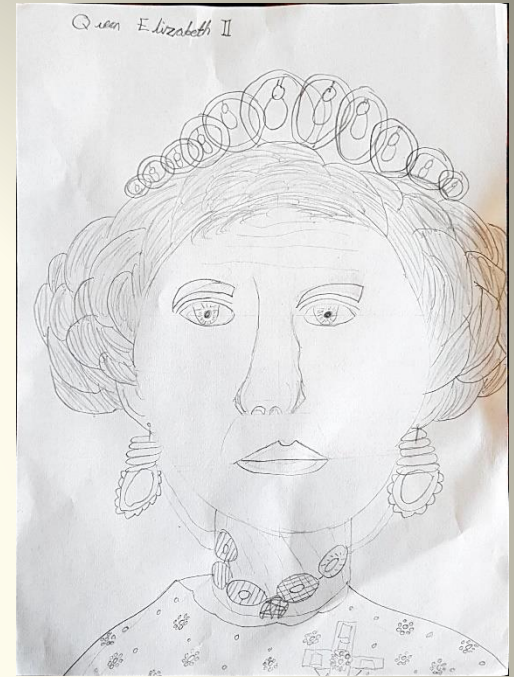
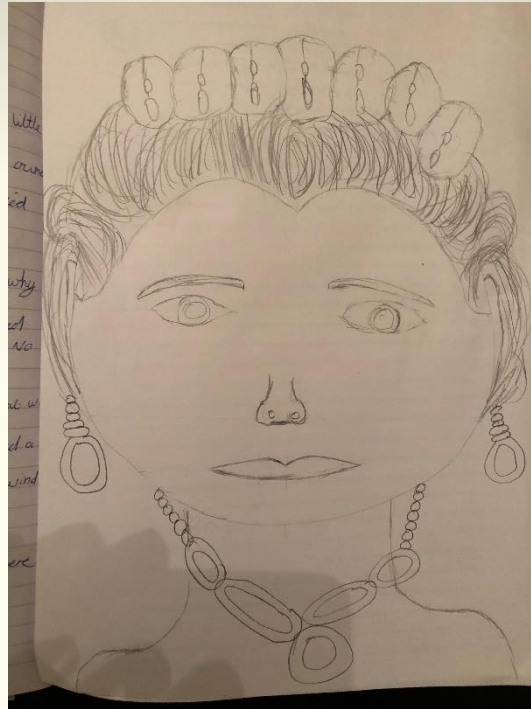
To sketch and colour a portrait of Queen Elizabeth II.





Last week we had a go at recreating this portrait of Queen Elizabeth II which is by Jian Shi.

Here are some of the fantastic portraits that you sent in.



This week, we're going to have a go at recreating this portrait of Queen Elizabeth II by the artist Romero Britto.





What are the similarities and differences between these two portraits?

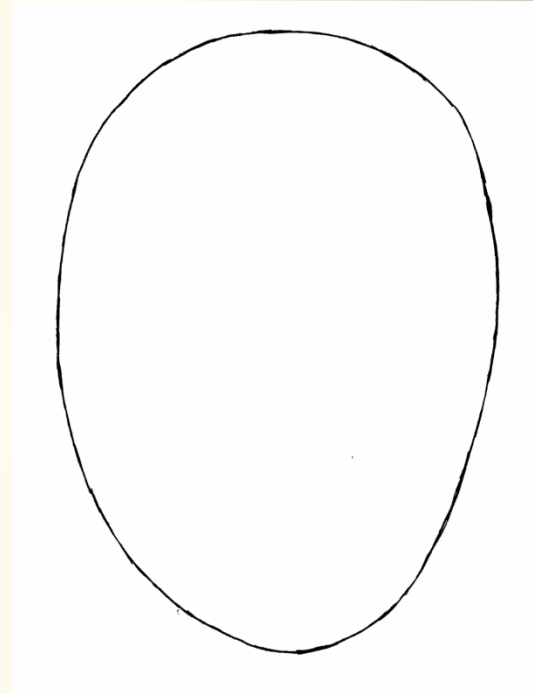


We are going to think about ideas of how we can draw and colour this portrait.

How do you think you could start your portrait?

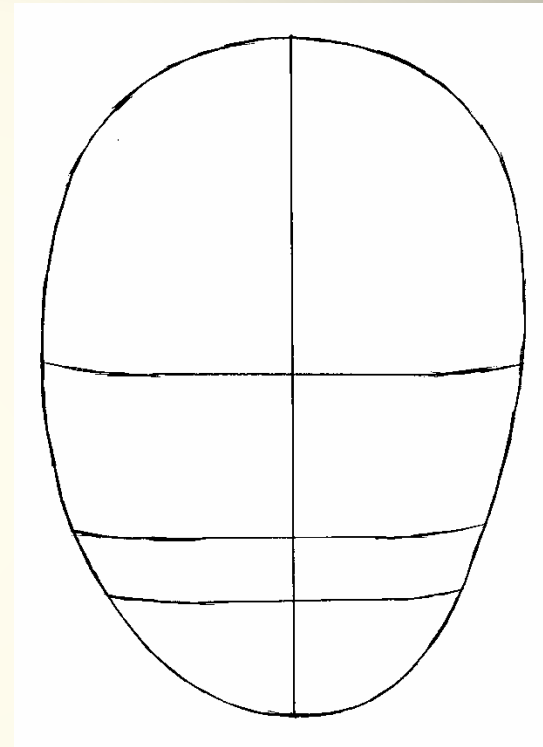


It would be a good idea to start by drawing an oval for the Queen's face.



Make sure that you use your pencil very lightly so that you can rub out easily. The Queen's hair will go over the line of the oval so you will need to be able to rub out.

What could you do next?



Divide your oval up carefully so that you can position the Queen's features correctly. Again, make sure that you use your pencil very lightly as you will need to rub out these lines later.



Romero Britto has used simple bold lines in his portrait.

Next you will need to add in all the details of the Queen's face, hair, crown, jewellery, neck and shoulders.

Finally, you need to draw in the background.

What can you see behind the Queen?

What could you do to make your pencil lines stand out more?



Once you are happy with your drawing you will need to decide how to add colour to your picture.

What are the colours like in the portrait?
Bright? Dull? Bold? Pale?

What media will you use to add colour to your portrait?

I'm looking forward to seeing
all your portraits!

