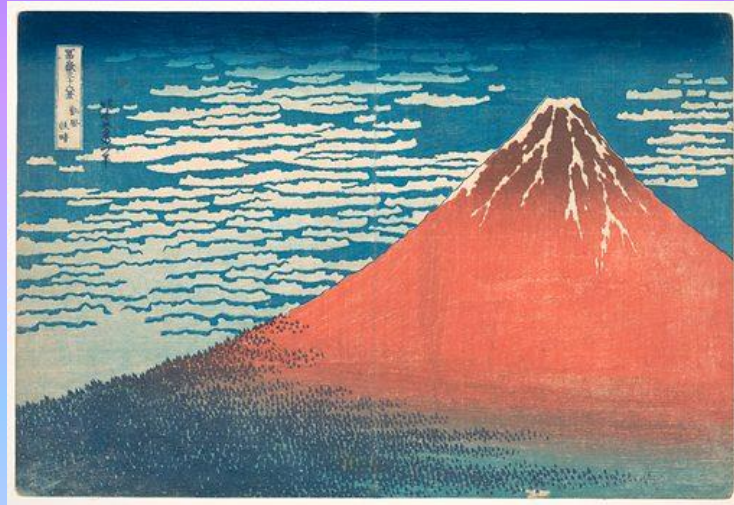


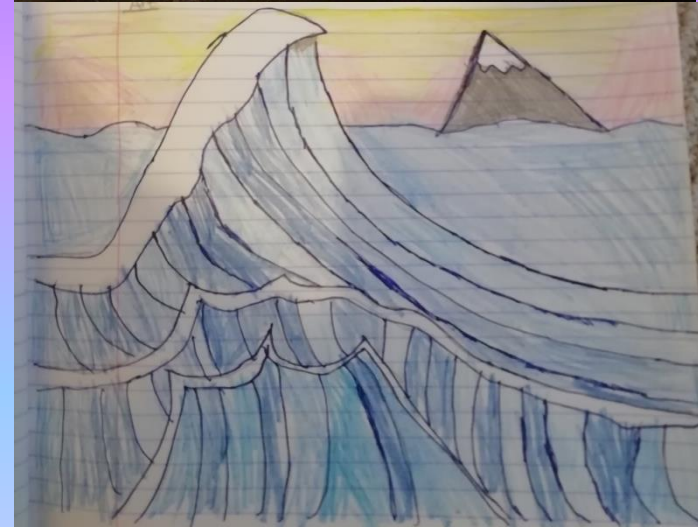
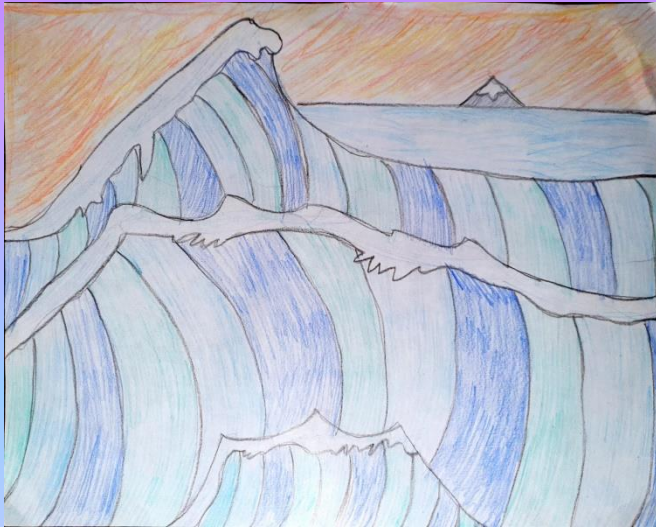
Hokusai

Learning Objective:

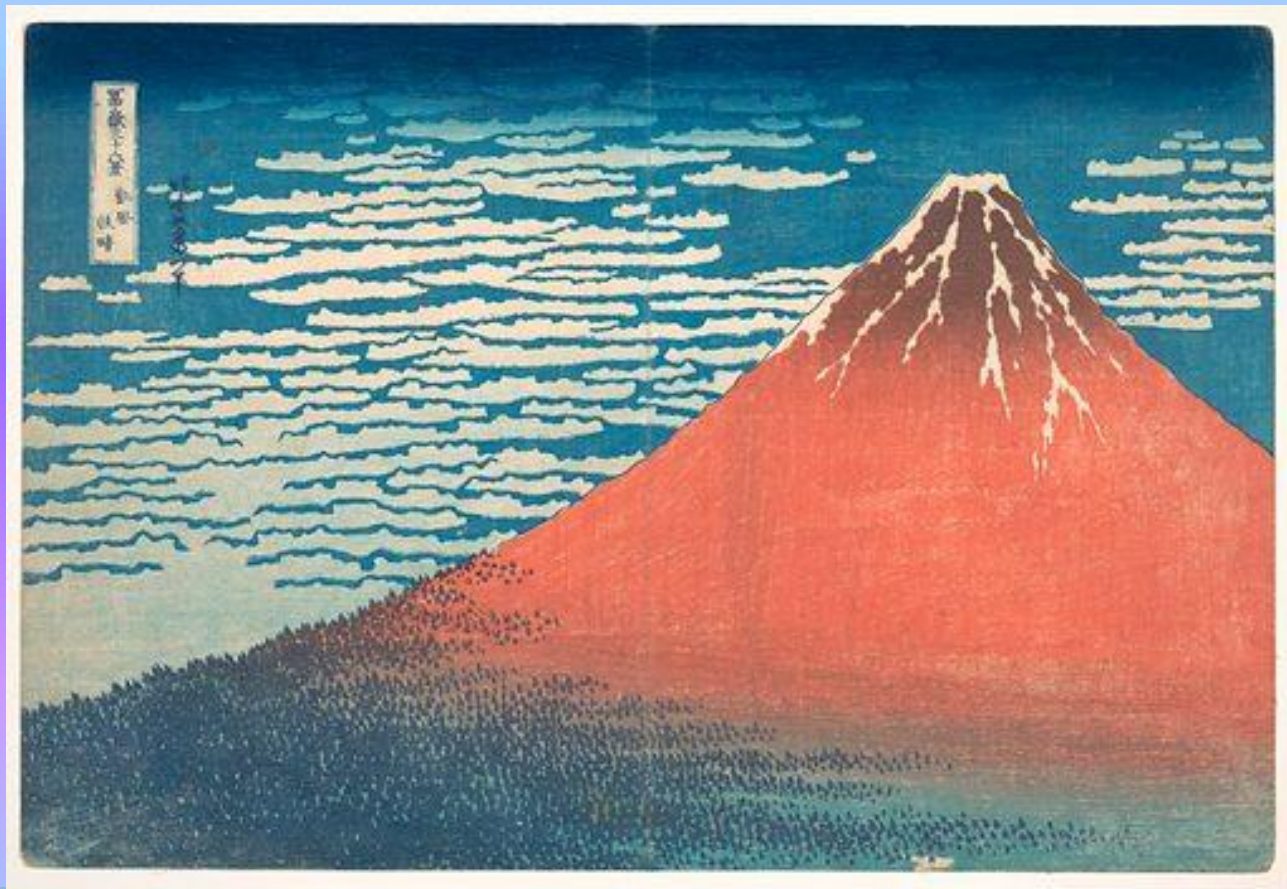
To create my own version of Hokusai's 'Red Fuji'.



Last week you made some fantastic Great Wave pictures in the style of Hokusai.



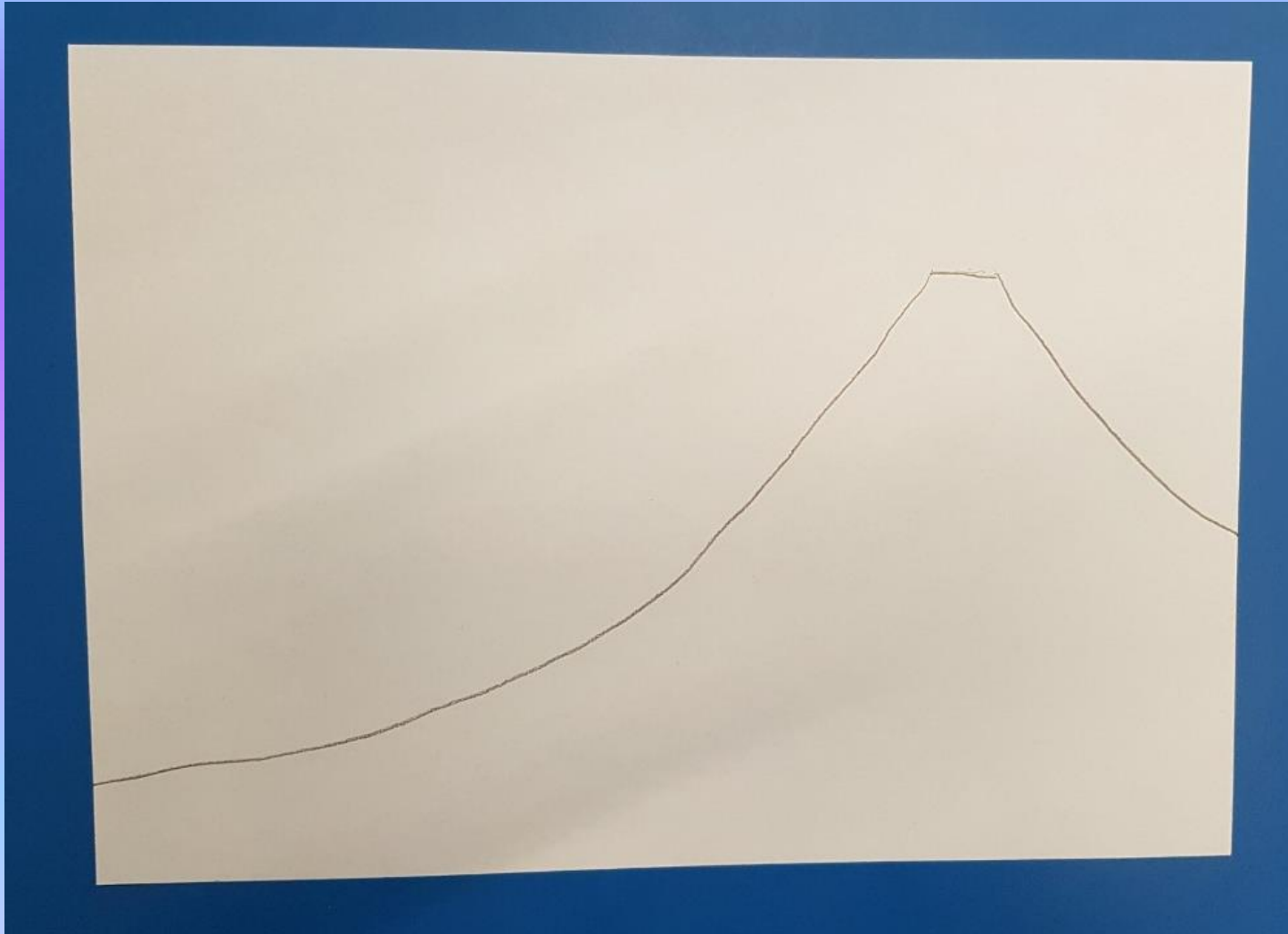
This week you are going to try and recreate this Hokusai picture called 'South Wind, Clear Sky', or 'Red Fuji'.



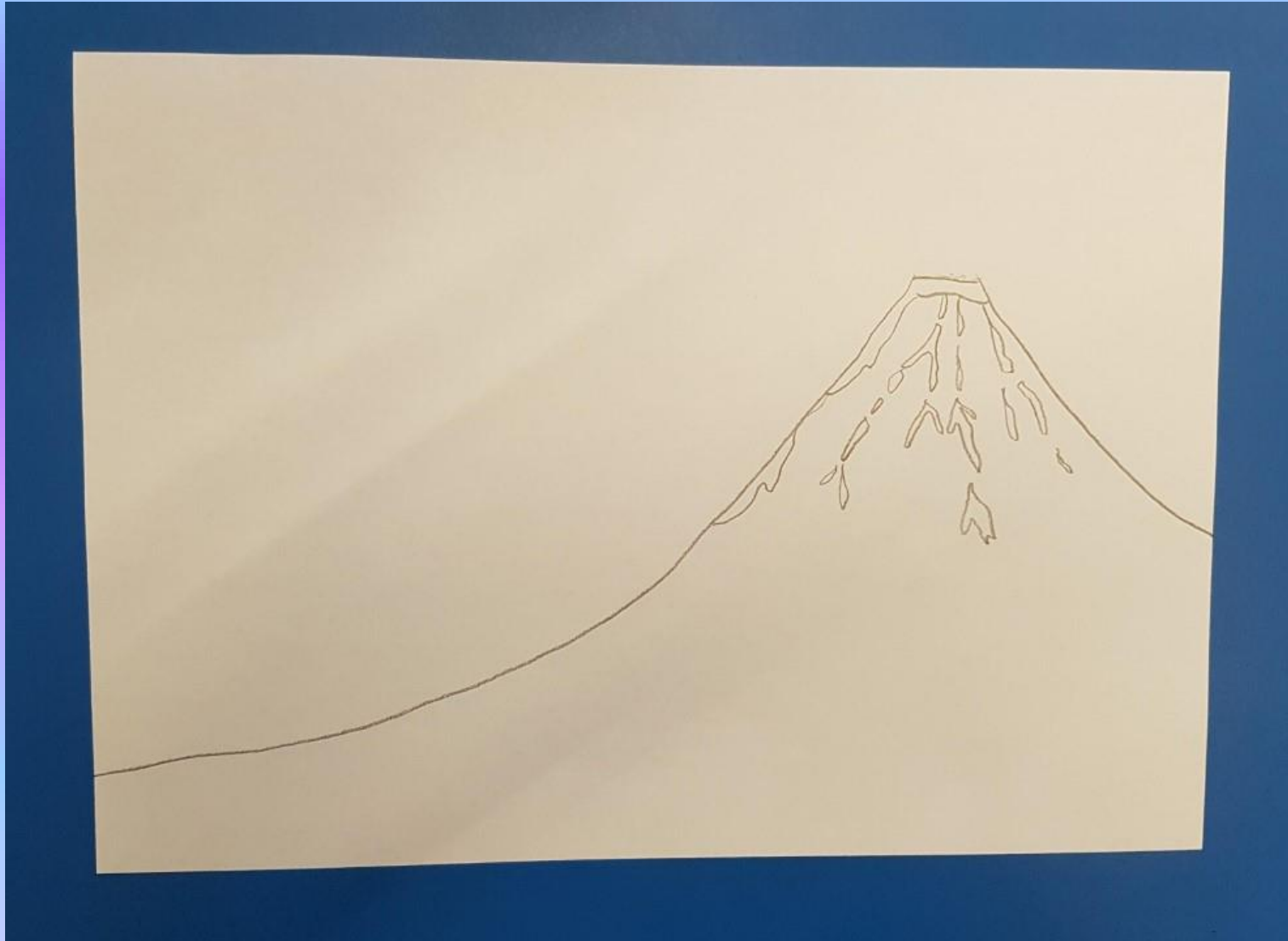
This print is another seascape but this time Mount Fuji is in the foreground.

We are going to look at how to sketch the outline of the picture together and then you will choose how you want to add colour to it.

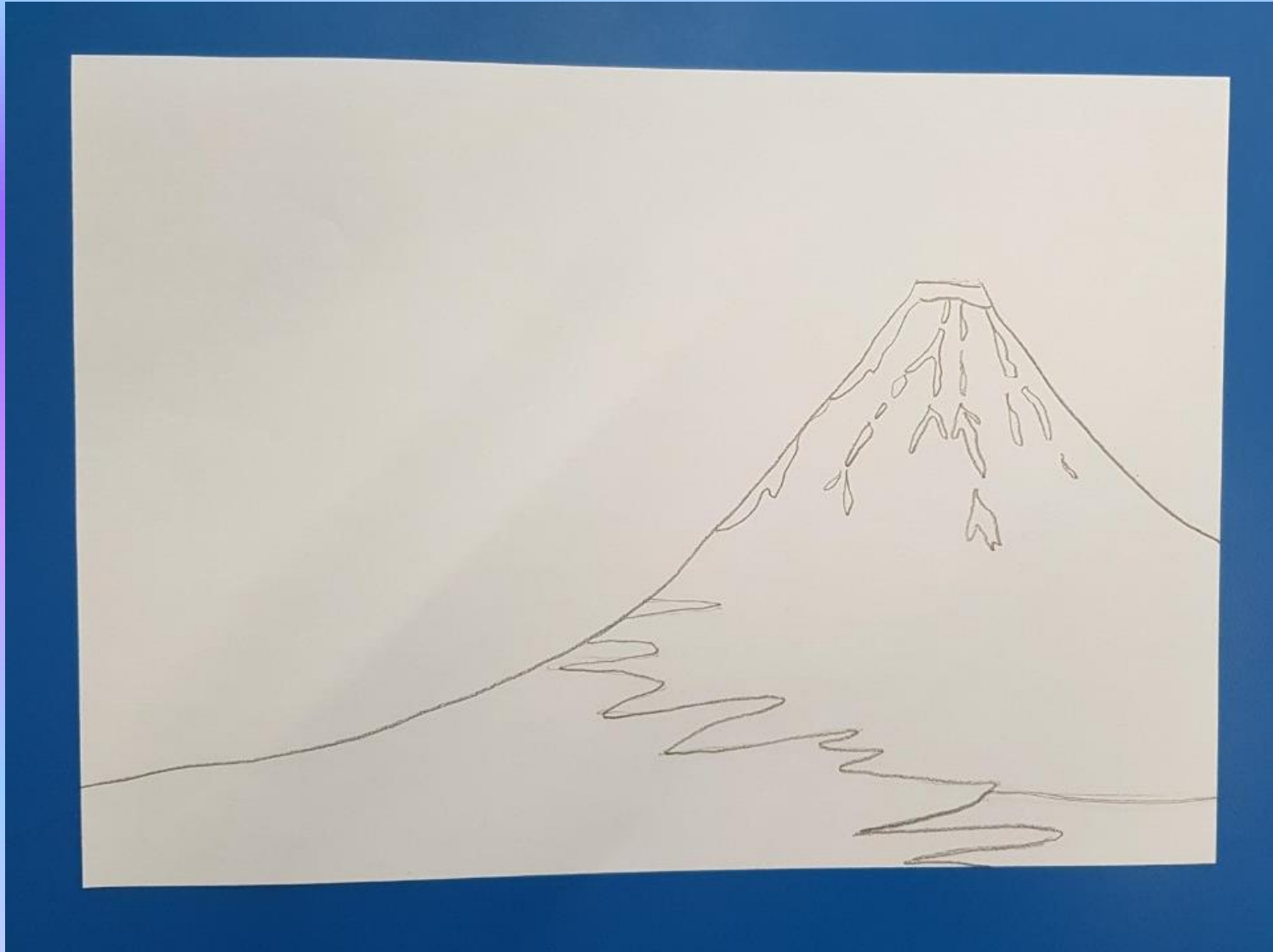
First, we will begin to sketch Mount Fuji in the foreground of the picture by drawing a simple line to show the shape of the mountain.



Then we will add in the detail of the snow on top of Mount Fuji.



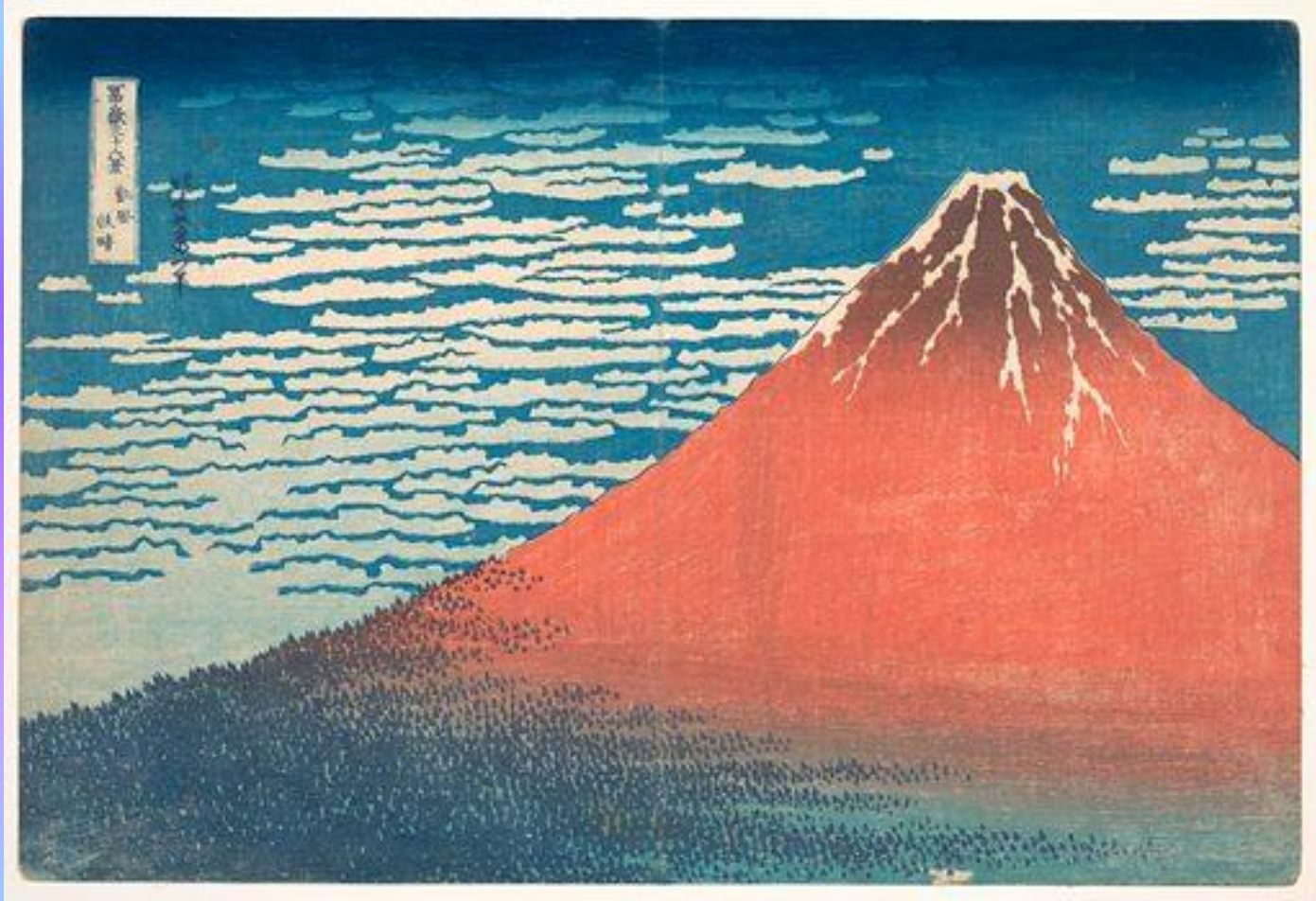
Next we will draw a line to show what part of the mountain is covered by trees (the green section).



Finally, we will add some detail to the sea, drawing shapes to show the white parts of the sea.



Once you have finished drawing the outline of your 'Red Fuji', you will need to think about how you will add colour to it.



Which colours will you need to use?

Which colours has Hokusai used for the mountain, sea and trees?

Has anybody got any ideas of the media, tools and techniques they might use?



I am looking forward
to seeing you fabulous
'Red Fuji' pictures!

