

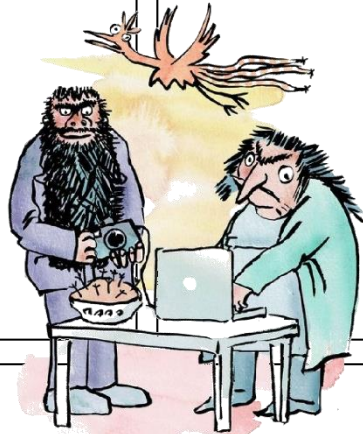
Can you identify these parts of Roald Dahl's style when he describes the Twits?

Simile

Metaphor

Questions

Brackets



Talking to the Reader

Simile is when you say something is 'like' something else, e.g. "the spikes on his beard stuck out like bristles on a nailbrush" or "as green as the grass".

Metaphor is when you say something IS something else, to create an image in the reader's head, e.g. "the hairy jungle round his mouth".

Questions — Roald Dahl asks the reader questions to help get them thinking about the story, e.g. "And when does he wash this face?"

Talking to the Reader — Unusually, Roald Dahl often speaks directly to the reader, e.g. "You and I can just wash our smooth faces".

Brackets — Sometimes Roald Dahl stops in the middle of a sentence to say something to the reader in brackets! The sentence carries on after the brackets, e.g. "Mr Twit (hold your noses, ladies and gentlemen) never washes his beard".